

Brava![®] Viewer Improves Santee Cooper's As-Built Design Process

Vertical Industry

- Utilities

Functional Areas

- Engineering

Company Facts

- Utility provides 1.8 million residents with power
- South Carolina's largest producer of electricity

Challenge

- Viewer for multiple formats to use during as-built process
- Provide consistent file views across all desktops
- Must be easy to use
- Tens of thousands of facility drawings and documents

Brava Solution

- Easy to find and view project files
- No need for native applications on all desktops

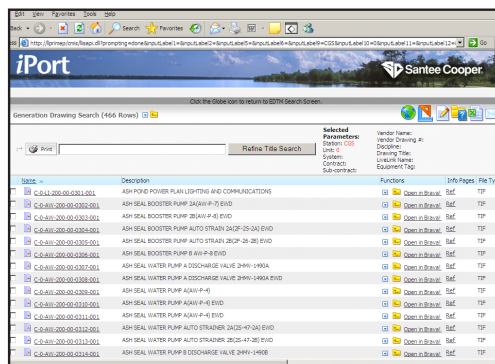
Because construction projects are rarely built exactly as originally designed, "as-built" drawings are created to capture all the changes made to the plans throughout the project. While original drawings are typically created with computer-aided design (CAD) software, as-built drawings usually consist of handwritten notes and sketches.

Serving important functions, as-built drawings make future repairs and maintenance easier by pointing out places for wiring, plumbing and other hidden components. In addition, local government or permitting agencies might require a copy of as-built drawings to show locations of sprinkler pipes, fire alarms and other safety devices.

Paper Documents and Multiple File Formats

Santee Cooper, South Carolina's state-owned electric and water utility, wanted a better way to manage its as-built drawing process. Established in 1934, Santee Cooper's first plants went online in the early 1940s. The designs for these early facilities are paper-based, so Santee Cooper scanned them into the system as TIFFs, making them easier for staff to access and eliminating concerns over damage to the drawings. Newer plants are also challenging because they have as many as 40,000 drawings and 1,000 technical manuals per facility.

Santee Cooper was already using Open Text[®] Livelink[®] ECM to manage its generating station drawings and other corporate documents. While Livelink made organizing content and searching for drawings easier, being able to actually review construction drawings and documents remained a challenge. In part, this was because vendors supply Santee Cooper with files in multiple formats, including AutoCAD, Visio, PDF and TIFF. Not having native design software made it difficult for Santee Cooper's team to view, annotate and collaborate on files.



The utility needed a viewer that could handle all formats natively—they did not want users to convert files or store renditions. They also needed to ensure everyone would see the files the same way and that the file views were accurate. Melanie Bodiford, Supervisor, Application Support at Santee Cooper explained that even with TIFF files, users may have different default viewers, "We needed a consistent tool to view files in the native format or the format in which they were received from the vendor."

Continued

Brava!® Viewer Improves Santee Cooper's As-Built Design Process

(Cont.)

Santee Cooper heard about Brava!® by Arizona-based Informative Graphics. Fully integrated to Livelink ECM, Brava offers the functionality Santee Cooper wanted and is intuitive enough for quick user adoption.

Quickly Finding and Viewing Documents

The 8,000 electronic drawings of Santee Cooper's natural gas-generating station were the first to go into the new system. Ten attributes were assigned to each drawing to help users find the right drawing quickly. These attributes included values such as contract number, unit designation and system and vendor name. When employees use their internal portal to search for files against the search attributes, each search result displays with a clear "Open in Brava" link. Without leaving their desks, users can now find and view the drawings they need in just a few quick steps.

Brava has excellent fidelity for accurate file views and is web-based, so there is no software to install on end-user machines. In addition to excellent fidelity and ease-of-use, Bodiford explains that employees like that Brava's view tools lets them rotate, change colors and manipulate the view however they need.

After successfully inputting the 8,000 drawings, Santee Cooper decided to use the same approach for the rest of the agency's tens of thousands of drawings and documents.

Summary

Whatever the format, Santee Cooper counts on Brava to provide fast, accurate views anywhere, anytime. No more paper drawings, couriers, storage, or out-of-date revisions.

With Brava users can electronically view, annotate and collaborate on virtually any file format, including MicroStation and AutoCAD drawings, TIFFs, PDFs and Microsoft Office documents. This lets users easily add and share markups and annotations without installing additional, expensive desktop applications.

Livelink ECM and Brava provide an effective way for Santee Cooper to manage a large library of paper documents and drawings for new and old construction projects alike.

